



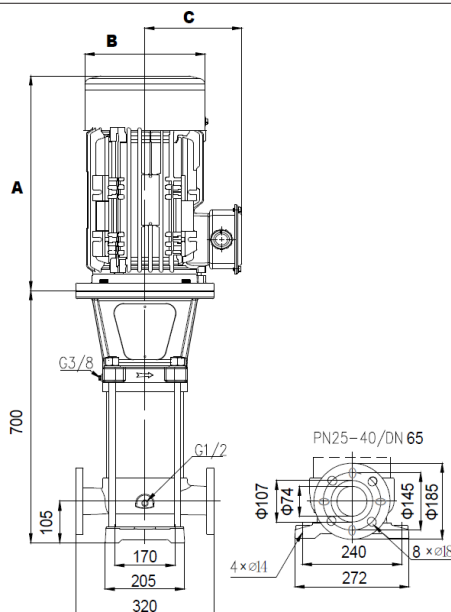
TECHNICAL DATA

RATED FLOW [M3/H]	32 m ³ /hr
MAX. FLOW	42 m ³ /hr
MAX. HEAD	68.1 m
OPTIMUM OPERATING RANGE	16m ³ /hr @ 65.3m 55.4% eff
	42m ³ /hr @ 44.3m 64.7% eff
WORKING AIR TEMP	0°C – 40°C
LIQUID TEMPERATURE	-15°C – 120°C
HIGHEST EFFICIENCY	72.9%
MAXIMUM PUMP PRESSURE	37 bar
NET WEIGHT (KG)	94.6 kg

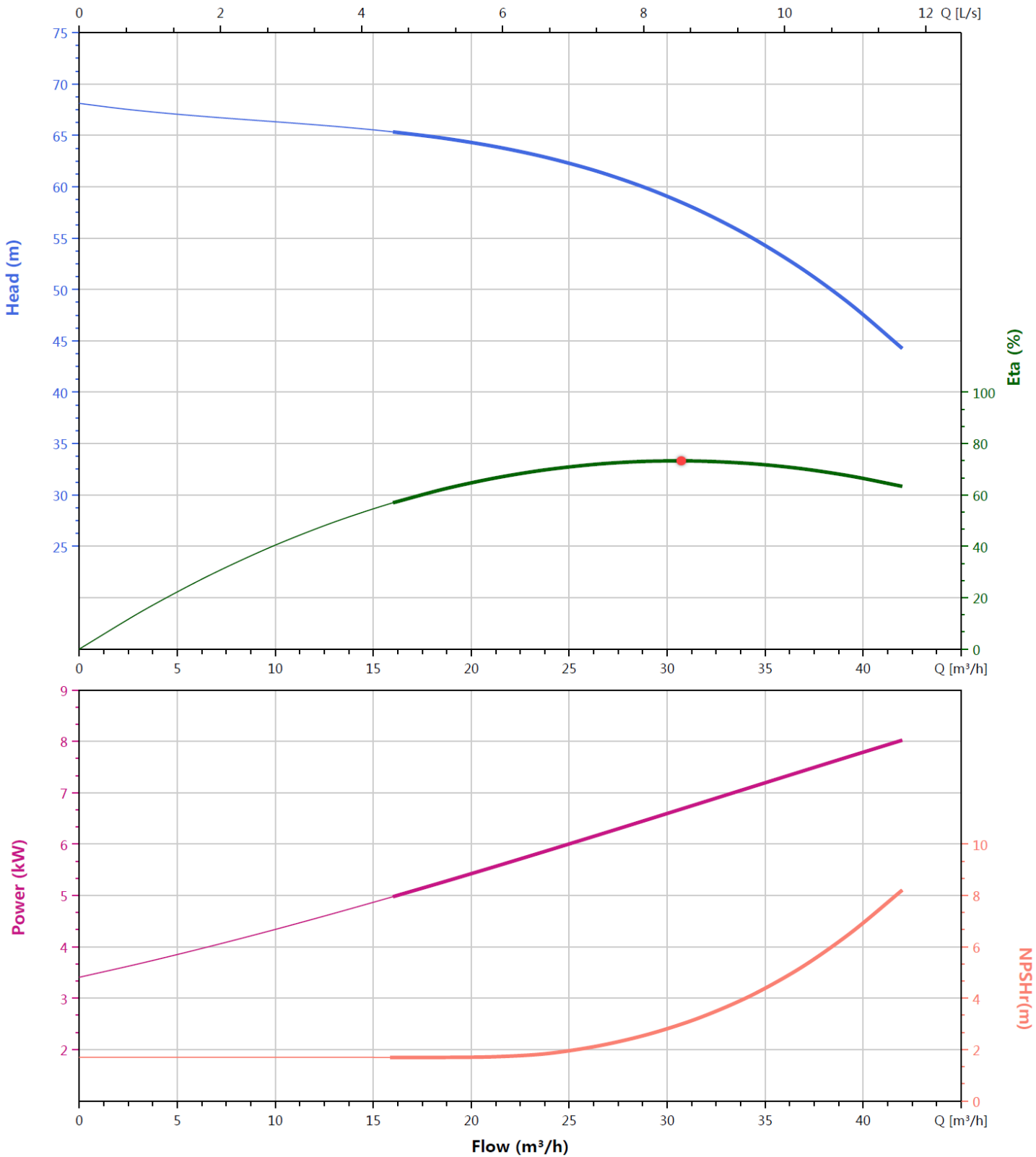
RATED VOLTAGE	Three phase 415V +10% -6%
RATED CURRENT	14.4 A
POWER (KW)	7.5kW 2-pole
MOTOR IP RATING	IP55
MOTOR INSULATION	Class F
MOTOR EFFICIENCY STD	I.E.3
MOTOR EFFICIENCY	90.1%
COS Ø	0.88
MECHANICAL SEAL	SVH-L-22
OUTLET DIN FLANGE	DN65

DIMENSIONS

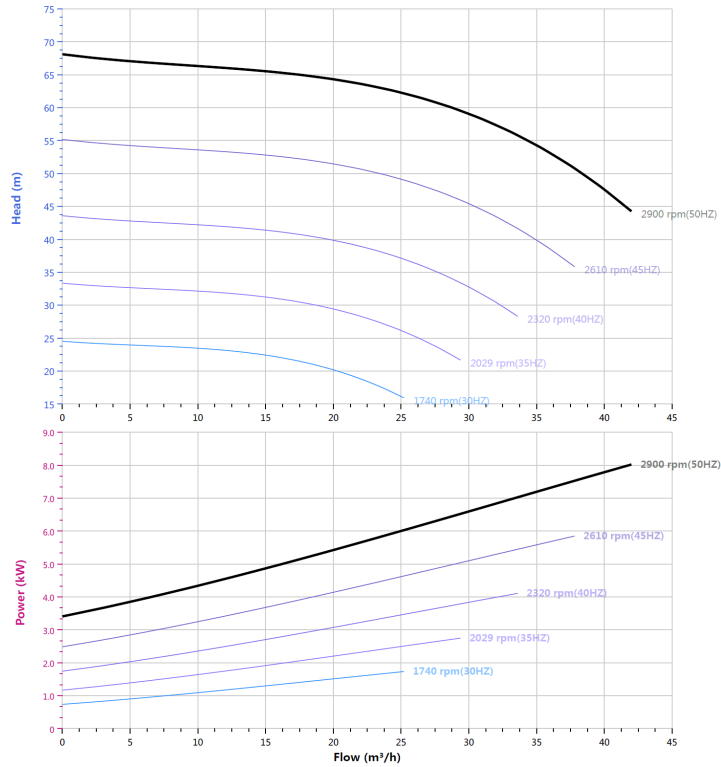
HEIGHT A	610
DIAMETER B	350
RADIUS C	260



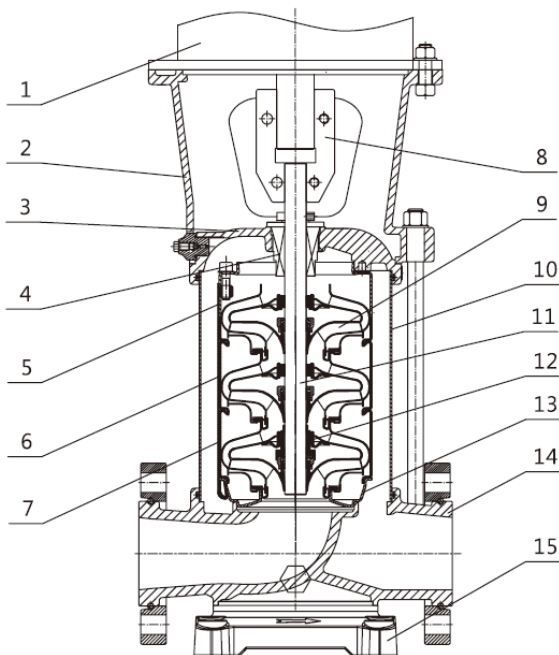
HYDRAULIC CURVE



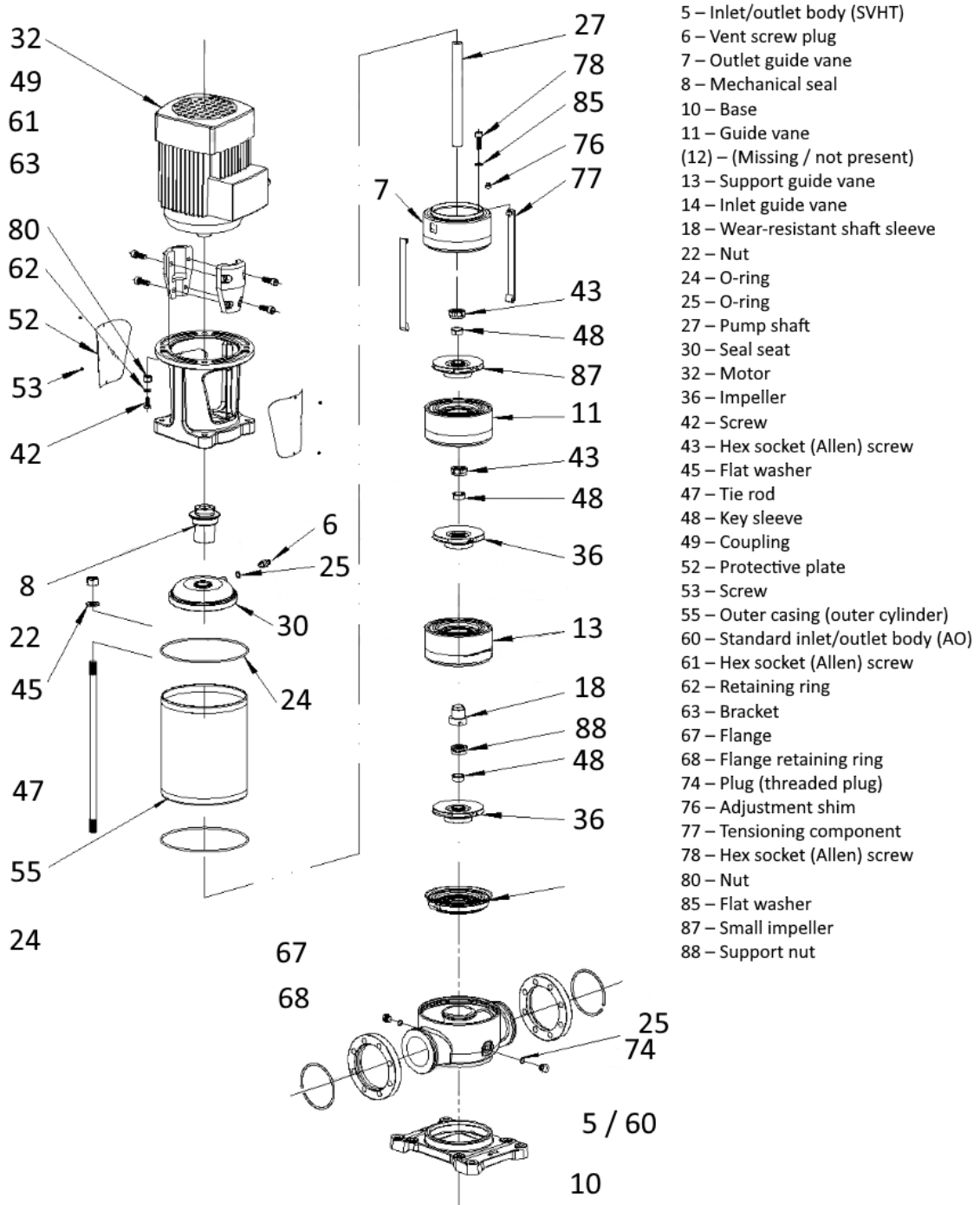
VFD CURVE



CUTAWAY



1	Motor	/
2	Bracket	Ductile Cast Iron
3	Seal Base	Stainless / Ductile Cast Iron
4	Mechanical Seal	SVH-L-22
5	Top Diffuser	Stainless Steel
6	Diffuser	Stainless Steel
7	Support Diffuser	Stainless Steel
8	Coupling	Stainless Steel
9	Impeller	Stainless Steel
10	Cylinder	Stainless Steel
11	Shaft	Stainless Steel
12	Intermediate Bearing	SiC / WC
13	Inducer	Stainless Steel
14	Inlet/Outlet Chamber	Stainless Steel / Ductile Cast Iron
15	Base	Ductile Cast Iron



WARRANTY / CERTIFICATIONS

